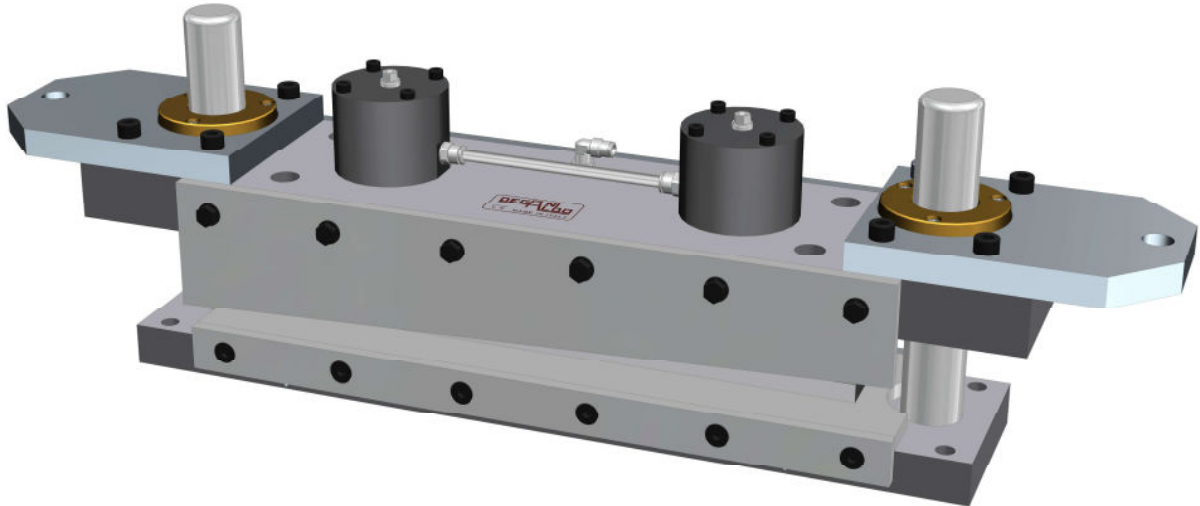


## **GRID TRIM DIE mod. DM**



- Manufactured in steel, bush and columns in hardened steel.
- Brass ejectors, easy disassembly for cleaning also with shear assembled on the machine.
- A particular geometrical shape of the blades allows their use on both sides reducing the sharpening expenses.
- The absence of spring for pressure bar handling eliminates frequent interventions and maintenance for their replacement.
- Automatic lubrication of the blades.
- The absence of cooling holes eliminates all inconvenience due to water (loss, calcareous, tubes, pipe fitting etc.).
- It could be used with all model of casting machine.
- A careful assembly ensures a perfect shear of the grids.
- The shearing size is according to customer request.

*Overall Dimensions: mm. 820x180x200 H - Weight: Kg. 80*

## **GRID TRIM DIE mod. SM**



- Manufactured in steel, bush and columns in hardened steel.
- Brass ejectors, easy disassembly for cleaning also with shear assembled on the machine.
- A particular geometrical shape of the blades allows their use on both sides reducing the sharpening expenses.
- It could be used with all model of casting machine.
- A careful assembly ensures a perfect shear of the grids.
- The shearing size is according to customer request.

*Overall dimensions (140): mm 814 x 172 x 267 H*

*Overall dimensions (103): mm 814 x 135 x 267 H*

*WE RESERVE ANY POSSIBLE MODIFICATIONS*